



Government of India
Ministry of Earth Sciences
India Meteorological Department



Press Release

Date: 25th August, 2025

Time of Issue: 1330 hours IST

**Subject: i) Heavy to Very heavy rainfall likely to continue over Northwest India till 26th August and reduce thereafter.
ii) Heavy to very heavy rainfall very likely to continue over Gujarat till 30th and over Rajasthan till 27th August.**

Realised weather during past 24 hours till 0830 hours IST of today, the 25th August, 2025:

- ❖ Heavy to very heavy rainfall at some places with Extremely heavy rainfall (≥ 21 cm) has been recorded at isolated places over Punjab and Haryana.
 - ❖ Very heavy rainfall (12-20 cm) has been recorded at isolated places over Himachal Pradesh and Rajasthan.
 - ❖ Heavy rainfall (7-11 cm) has been recorded at isolated places over Jammu & Kashmir, East Uttar Pradesh, Madhya Pradesh, Gujarat Region, Nicobar Islands, Odisha, Bihar, Arunachal Pradesh and Assam.
- For more details of realised weather, kindly refer [Annexure I](#).

i. Weather Systems, Forecast and Warnings (refer to Annexure II & III):

- ❖ The Monsoon trough runs near its normal position.
- ❖ An **upper air cyclonic circulation** lay over northwest Bay of Bengal off Odisha-West Bengal coasts at lower & middle tropospheric levels tilting southwards with height. Under its influence, a **Low Pressure** area is likely to form over the same region during next 48 hours.
- ❖ An **upper air cyclonic circulation** lay over south Haryana & adjoining northeast Rajasthan at lower & middle tropospheric levels and tilting southwards with height.
- ❖ A **trough** runs from upper air cyclonic circulation over south Haryana & adjoining northeast Rajasthan to the **cyclonic circulation** over northwest Bay of Bengal off Odisha-West Bengal coasts at lower tropospheric levels.
- ❖ A **Western Disturbance** as a trough at lower & middle tropospheric levels runs roughly along Long. 70°E to north of Lat. 28°N.

Under the influence of these systems, the following weather is likely:

Northwest India:

- ❖ Isolated **heavy rainfall** likely over Uttarakhand, Himachal Pradesh, East Rajasthan during next 7 days; Jammu & Kashmir on 25th & 26th; Haryana, Punjab during 25th-27th & on 29th, 30th; Uttar Pradesh on 25th, during 29th-31st August with **isolated very heavy rainfall over Jammu & Kashmir, Himachal Pradesh, Punjab, Haryana, Chandigarh, West Rajasthan on 25th & 26th; East Rajasthan during 25th-27th and Uttarakhand on 29th & 30th August.**
- ❖ Light/moderate rainfall at most/many places accompanied with thunderstorm & lightning likely over the western Himalayan region during next 7 days and adjoining plains during next 3 days and scattered rainfall during subsequent 4 days.

East & Central India:

- ❖ Isolated **heavy rainfall** likely over Chhattisgarh, Odisha during next 5 days; Sub-Himalayan West Bengal & Sikkim on 27th, 29th; Bihar, Madhya Pradesh on 25th, during 29th-31st; Jharkhand on 30th & 31st; Vidarbha during 28th-30th August with **isolated very heavy rainfall over Odisha on 26th & 27th August.**

- ❖ Light to moderate rainfall at most/many places accompanied with thunderstorm & lightning likely over the region during next 7 days.

West India:

- ❖ **Spell of heavy rainfall is very likely to continue over Gujarat state during next 7 days with very heavy rainfall over the region during 25th-27th August.**
- ❖ **Heavy rainfall** is very likely over Konkan & Goa, Madhya Maharashtra during next 7 days.
- ❖ Light to moderate rainfall at most/many places very likely over the region during next 7 days.

Northeast India:

- ❖ Isolated **heavy rainfall** likely to continue over Assam & Meghalaya, Arunachal Pradesh during next 6-7 days; Nagaland, Manipur, Mizoram & Tripura during 27th-30th August.
- ❖ Light/moderate rainfall at many places accompanied with thunderstorm & lightning likely during next 3 days.

South Peninsular India:

- ❖ Isolated **heavy rainfall** likely over Kerala & Mahe during 26th-29th; Coastal Karnataka during 26th-30th; Interior Karnataka, Tamil Nadu, Telangana on 27th & 28th; Coastal Andhra Pradesh & Yanam during 25th-27th August with **very heavy rainfall over Coastal Andhra Pradesh on 26th August.**
- ❖ Light to moderate rainfall at some places accompanied with thunderstorm & lightning likely over the region during next 3 days and many places during subsequent 4 days.

Fishermen warning:

Fishermen are advised not to venture into the following from 25th August to 30th August 2025 to the following Areas:

Arabian Sea:

Along and off the Somalia, Oman coasts and adjoining sea areas during 25th to 30th August; over most parts of central Arabian Sea and adjoining areas of southwest, north Arabian Sea during 25th to 27th August; over entire central Arabian Sea and adjoining areas of southwest, north Arabian Sea during 27th to 30th August; over Lakshadweep, Comorin areas during 26th to 28th August; along and off Gujarat coast on 25th August; along and off south Gujarat, Konkan, Goa, Karnataka coasts during 26th to 30th August; along and off Kerala coast during 26th to 29th August.

Bay of Bengal:

Along and off Odisha, West Bengal, Bangladesh coasts during 26th to 30th August, along and off Andhra Pradesh coast; over most parts of Bay of Bengal during 27th to 30th August; few parts of southwest Bay of Bengal during 25th to 27th August.

ii. Weather conditions and forecast over Delhi/NCR during 25th to 28th August, 2025 (Annexure IV)

For more details, kindly refer National Weather Bulletin:

https://mausam.imd.gov.in/responsive/all_india_forecast_bulletin.php

For District wise warnings refer: <https://mausam.imd.gov.in/responsive/districtWiseWarningGIS.php>

For Fishermen warning refer <https://rsmcnewdelhi.imd.gov.in/fishermen-warning.php>

Rainfall recorded (in cm) during past 24 hours till 0830 hours IST of today, the 25th August:

Punjab: Sangrur (dist Sangrur) 22, Sangrur Aws (dist Sangrur) 17, Phangota (dist Pathankot) 16, Ranjit Sagar Dam Site (dist Pathankot) 15, Ganguwal (dist Rupnagar) 12, Bul Irr (dist Ludhiana) 10, Kotla (dist Rupnagar) 10, Madhopur (dist Pathankot) 10, Malikpur (dist Pathankot) 9, Samrala (dist Ludhiana) 9, Barnala (dist Barnala) 9, Shahpur Kandi (dist Pathankot) 9, Sunam (dist Sangrur) 9, Malerkotla (dist Sangrur) 9, Jagraon (dist Ludhiana) 8, Ferozpur Kvk Aws (dist Ferozepur) 8, Nakodar (dist Jalandhar) 8, Pau Ludhiana (dist Ludhiana) 7, Jalandhar (dist Jalandhar) 7, Gurudaspur (dist Gurdaspur) 7, Lohand (dist Rupnagar) 7, Dasuya (dist Hoshiarpur) 7,

Haryana: Jakhal Mandi Hmo (dist Fatehabad) 21, Tohana (dist Fatehabad) 15, Fatehabad (dist Fatehabad) 9, Shivan Rev (dist Kaithal) 9, Rajaund (dist Kaithal) 9, Rattia (dist Fatehabad) 8, Narwana (dist Jind) 7, Hissar Rev (dist Hisar) 7, Uklana Rly (dist Hisar) 7, Kanina (dist Mahendragarh) 7, Uklana Rev (dist Hisar) 7,

Himachal Pradesh: Kahu (dist Bilaspur) 19, Barthin (dist Bilaspur) 16, Naina Davi (dist Bilaspur) 15, Bilaspur Sadar (dist Bilaspur) 14, Chuari (dist Chamba) 14, Mehre (barsar) (dist Hamirpur) 13, Amb (dist Una) 11, Aghar (dist Hamirpur) 11, Bangana_r (dist Una) 10, Ghamroor (dist Kangra) 10, Bharwain (dist Una) 9, Nadaun (dist Hamirpur) 9, Hamirpur (dist Hamirpur) 9, Dharmsala (dist Kangra) 9, Bharari (dist Hamirpur) 9, Kasauli (dist Solan) 9, Sundarnagar (dist Mandi) 8, Baldwara (dist Mandi) 8, Saloni (dist Chamba) 8, Una (dist Una) 8, Sujanpur Tira (dist Hamirpur) 8, Dharampur (dist Solan) 7, Dehra Gopipur (dist Kangra) 7, Chamba (dist Chamba) 7, R L Bbmb (dist Bilaspur) 7, Palampur (dist Kangra) 7,

West Rajasthan: Nagaur Tehsil Sr (dist Nagaur) 17, Sujangarh (dist Churu) 16, Jalore (dist Jalore) 12, Jayal Sr (dist Nagaur) 11, Ahore Sr (dist Jalore) 11, Sangaria Sr (dist Hanumangarh) 10, Khivensar Sr (dist Nagaur) 10, Lunkaransar (dist Bikaner) 9, Degana (dist Nagaur) 9, Balotra Sr (dist Barmer) 8, Bilara (dist Jodhpur) 8, Pilibanga Sr (dist Hanumangarh) 7,

East Rajasthan: Kherwara (dist Udaipur) 16, Mounntabu Tehsil Sr (dist Sirohi) 12, Sikar Tehsil Sr (dist Sikar) 11, Deogarh (dist Rajsamand) 10, Kanva Sr (dist Dungarpur) 9, Sirohi (dist Sirohi) 8, Jhadol Sr (dist Udaipur) 8, Sheoganj (dist Sirohi) 8, Sarara (dist Udaipur) 7, Devel Sr (dist Dungarpur) 7, Dholpur Tehsil Sr (dist Dholpur) 7, Pindwara (dist Sirohi) 7, Sapau Sr (dist Dholpur) 7,

East Uttar Pradesh: Banda (dist Banda) 11, Bindki (dist Fatehpur) 10, Beberu (dist Banda) 10, Manikpur (dist Chitrakoot) 9, Chhibramau (dist Kannauj) 8, Prayagraj Pbo (dist Prayagraj) 8, Naraini (dist Banda) 8, Pratapgarh (t) (dist Pratapgarh) 7, Karwi (dist Chitrakoot) 7, Chillaghat (dist Banda) 7, Patti (dist Pratapgarh) 7,

Gujarat Region: Umerpada (dist Surat) 11, Khedbrahma (dist Sabarkantha) 10, Sankheda (dist Chhota Udepur) 10, Idar (dist Sabarkantha) 10, Vyara (dist Tapi) 10, Valod (dist Tapi) 8, Vadali (dist Sabarkantha) 8, Dabhoi (dist Vadodara) 8, Vijaynagar (dist Sabarkantha) 8, Bhiloda (dist Aravalli) 8, Ukai (dist Surat) 7, Radhanpur (dist Patan) 7, Danta (dist Banaskantha) 7, Mandvi (dist Surat) 7,

Jammu & Kashmir: Kathua (dist Kathua) 9,

Arunachal Pradesh: Itanagar (dist Papumpara) 7,

Assam & Meghalaya: Sonari AEGCL AWS (dist Charaideo) 10,

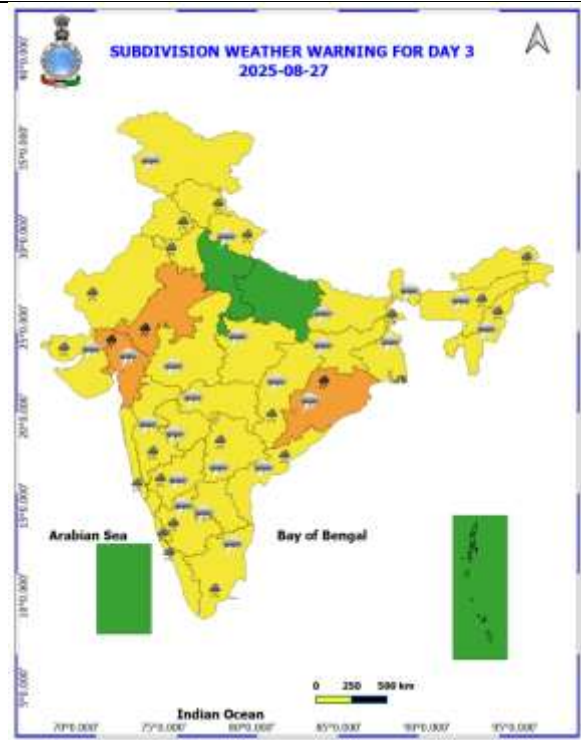
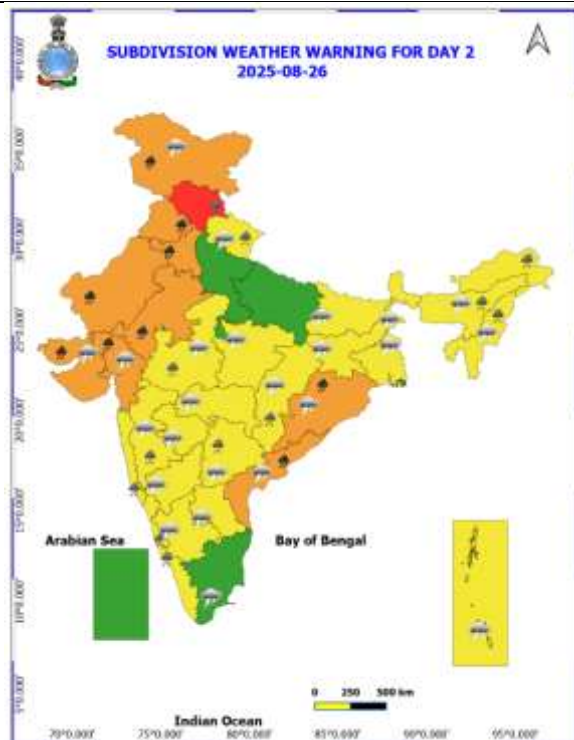
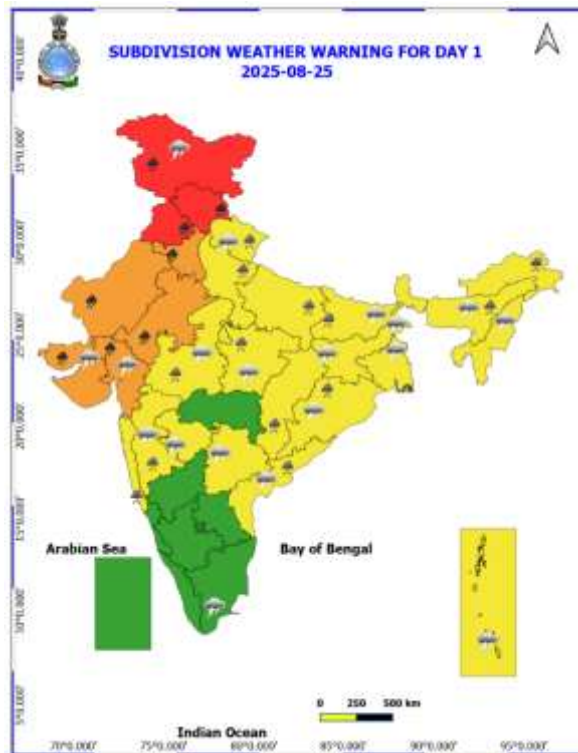
Bihar: Khizirsarai (dist Gaya) 7,

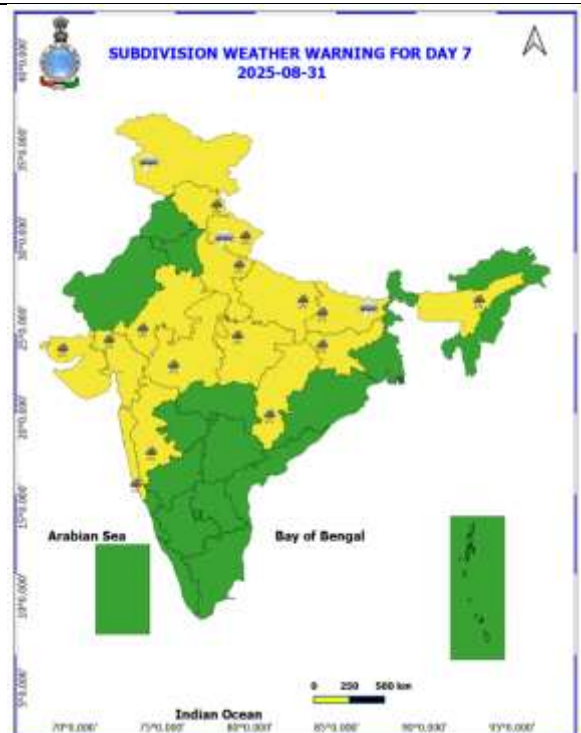
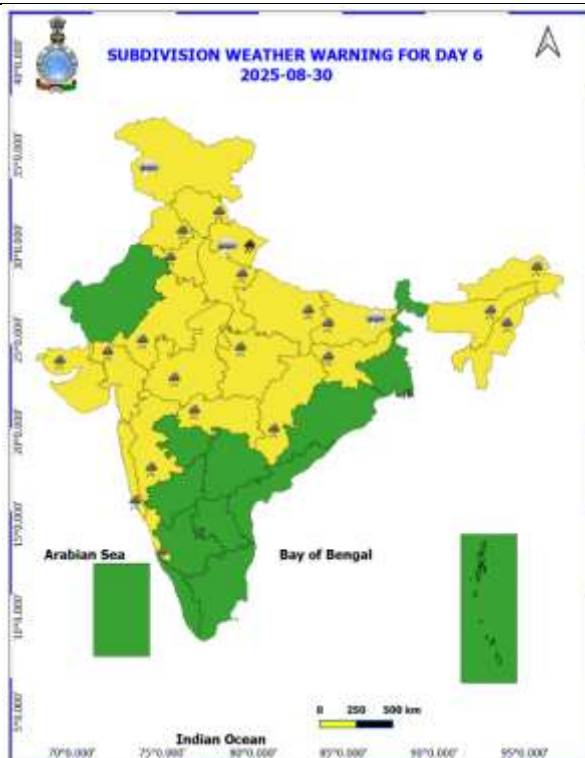
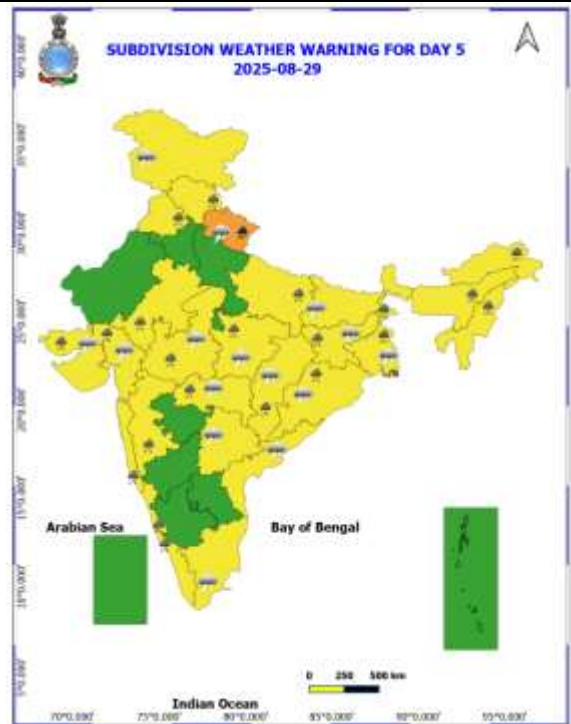
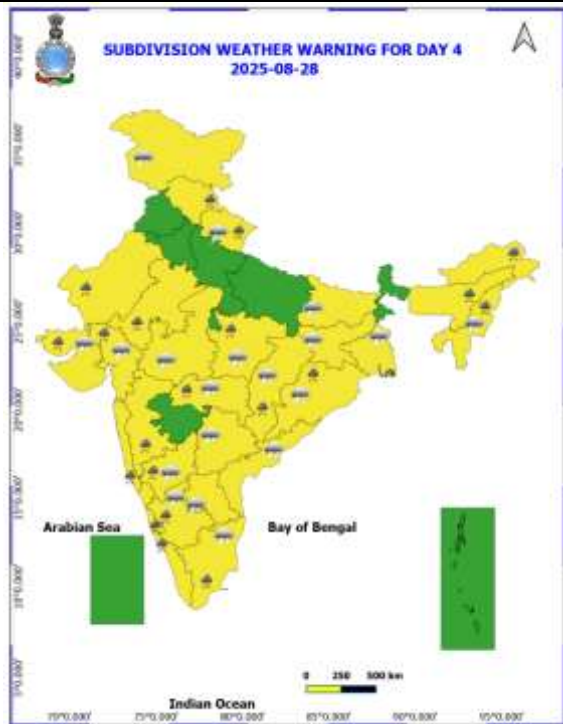
Odisha: Th Rampur (dist Kalahandi) 7, Tiring (dist Mayurbhanj) 7,

Andaman & Nicobar Island : Car Nicobar (dist Nicobar) 7,

Table-1								
7 Days Rainfall Forecast								
S.No.	Subdivision	25- Aug	26- Aug	27- Aug	28- Aug	29- Aug	30- Aug	31- Aug
		Day 1	Day 2	Day 3	Day 4	Day 5	Day 6	Day 7
1	ANDAMAN & NICOBAR ISLANDS	WS	WS	FWS	FWS	FWS	FWS	WS
2	ARUNACHAL PRADESH	SCT	SCT	FWS	WS	WS	SCT	SCT
3	ASSAM & MEHGHALAYA	FWS	SCT	FWS	FWS	WS	SCT	SCT
4	NAGALAND, MANIPUR, MIZORAM AND TRIPURA	FWS	FWS	FWS	WS	FWS	FWS	FWS
5	SUB HIMALAYAN WEST BENGAL & SIKKIM	FWS	FWS	WS	WS	WS	WS	WS
6	GANGETIC WEST BENGAL	FWS	SCT	FWS	FWS	WS	WS	WS
7	ODISHA	WS	WS	WS	FWS	FWS	FWS	FWS
8	JHARKHAND	FWS	SCT	SCT	FWS	WS	WS	WS
9	BIHAR	FWS	SCT	SCT	SCT	SCT	FWS	FWS
10	EAST UTTAR PRADESH	WS	SCT	SCT	SCT	FWS	FWS	FWS
11	WEST UTTAR PRADESH	WS	FWS	SCT	SCT	SCT	FWS	FWS
12	UTTARAKHAND	WS	WS	FWS	FWS	WS	WS	FWS
13	HARYANA, CHANDIGARH & DELHI	WS	WS	SCT	SCT	FWS	FWS	FWS
14	PUNJAB	WS	WS	SCT	SCT	FWS	FWS	FWS
15	HIMACHAL PRADESH	WS	WS	WS	FWS	FWS	WS	WS
16	JAMMU AND KASHMIR AND LADAKH	WS	WS	SCT	ISOL	ISOL	SCT	SCT
17	WEST RAJASTHAN	FWS	FWS	FWS	FWS	SCT	SCT	FWS
18	EAST RAJASTHAN	WS	WS	FWS	FWS	FWS	FWS	FWS
19	WEST MADHYA PRADESH	FWS	FWS	FWS	FWS	WS	WS	WS
20	EAST MADHYA PRADESH	FWS	FWS	FWS	FWS	WS	WS	WS
21	GUJRAT REGION	WS	WS	WS	WS	WS	WS	WS
22	SAURASHTRA & KUTCH	WS	WS	WS	WS	WS	WS	WS
23	KONKAN & GOA	WS	WS	WS	WS	WS	WS	WS
24	MADHYA MAHARASHTRA	SCT	SCT	SCT	FWS	FWS	SCT	SCT
25	MARATHWADA	ISOL	ISOL	SCT	SCT	FWS	ISOL	ISOL
26	VIDARBHA	SCT	FWS	FWS	FWS	WS	WS	WS
27	CHHATTISGARH	WS	WS	WS	WS	WS	WS	FWS
28	COASTAL ANDHRA PRADESH	SCT	FWS	FWS	SCT	SCT	SCT	SCT
29	TELANGANA	ISOL	FWS	FWS	SCT	SCT	SCT	SCT
30	RAYALASEEMA	ISOL	SCT	SCT	ISOL	ISOL	ISOL	ISOL
31	TAMILNADU & PUDUCHERRY	ISOL	ISOL	ISOL	ISOL	ISOL	ISOL	ISOL
32	COSTAL KARNATAKA	FWS	WS	WS	WS	WS	WS	WS
33	NORTH INTERIOR KARNATAKA	ISOL	SCT	FWS	WS	FWS	SCT	SCT
34	SOUTH INTERIOR KARNATAKA	ISOL	SCT	FWS	WS	FWS	SCT	ISOL
35	KERALA AND MAHE	ISOL	FWS	WS	WS	WS	WS	FWS
36	LAKSHADWEEP	SCT	FWS	WS	WS	WS	FWS	FWS

- As the lead period increases forecast accuracy decrease.





- Action may be taken based on ORANGE AND REDCOLOUR warnings.
- Vulnerable regions likely urban and hilly areas action may be initiated for heavy rainfall warning.
- As the lead period increases forecast accuracy decreases.

Detailed districtwise Multi Hazard weather warning for next five days available at
<https://mausam.imd.gov.in/responsive/districtWiseWarningGIS.php>

Weather forecast over Delhi/NCR during 25th to 28th August 2025**Past Weather:**

There has been no large change in the minimum temperature and fall in maximum temperature up to 2°C over Delhi/NCR during the past 24 hours. The maximum and minimum temperatures over Delhi were around 32 to 34°C and 23 to 25°C respectively. The minimum temperature was below normal up to 1 – 2°C and maximum temperature was below normal up to 1 – 3°C. Generally cloudy sky conditions with predominant surface wind from the northeast/east direction with wind speeds up to 18 kmph prevailed during the past 24 hours. Light rain/thundershowers at many places with moderate rain at isolated places has been recorded in Delhi. Generally cloudy sky conditions with a wind speed of less than 20 kmph from the east direction prevailed over the region in the forenoon today.

Weather Forecast:

25.08.2025: Generally cloudy sky. One or two spells of very light to light rain/thundershowers at many places with moderate rain at isolated places during afternoon/evening. The maximum temperatures over Delhi are likely to be in the range of 30 to 32°C. The maximum temperature will be below normal up to 2 to 4 °C. The predominant surface wind will likely be from the southeast direction with a wind speed of up to 15-20 kmph during the afternoon hours. The wind speed will decrease becoming less than 15 kmph from the southeast direction during the evening and night.

26.08.2025: Generally cloudy sky. One or two spells of very light to light rain/thundershowers. The maximum and minimum temperatures over Delhi are likely to be in the range of 31 to 33°C and 21 to 23°C respectively. The minimum temperature will be below normal up to 2 to 4°C and the maximum temperature will be below normal up to 1 to 2°C. The predominant surface wind will likely to be from the southeast direction with a wind speed of up to 15-20 kmph during morning hours. The wind speed will gradually decrease becoming less than 15 kmph from the southeast direction in the afternoon. The wind speed will decrease becoming less than 12 kmph from the southeast direction during the evening and night.

27.08.2025: Generally cloudy sky. Possibility of very light to light rain/ thundershowers. The maximum and minimum temperatures over Delhi are likely to be in the range of 32 to 34°C and 22 to 24°C respectively. The minimum temperature will be below normal up to 2 to 4°C and the maximum temperature will be near normal. The predominant surface wind will likely to be from the southeast direction with a wind speed of up to 15-20 kmph during morning hours. The wind speed will gradually decrease becoming less than 16 kmph from the southeast direction in the afternoon. The wind speed will decrease becoming less than 12 kmph from the southeast direction during the evening and night.

28.08.2025: Generally cloudy sky. possibility of very light to light rain/thundershowers. The maximum and minimum temperatures over Delhi are likely to be in the range of 33 to 35°C and 23 to 25°C respectively. The minimum temperature will be below normal up to 1 to 2°C and the maximum temperature will be near normal. The predominant surface wind will likely be from the southeast direction with a wind speed of less than 20 kmph during the morning hours. The wind speed will gradually decrease becoming less than 16 kmph from the southeast direction in the afternoon. The wind speed will decrease becoming less than 12 kmph from the southeast direction during the evening and night.

Impact expected and Action Suggested due to light to moderate rainfall with thundershowers:

- Damage to standing crops, Minor to major damage to power and communication lines due to breaking of branches, Partial damage to vulnerable structures due to strong winds, Loose objects may fly.
- People are advised to keep a watch on the weather for worsening conditions and be ready to move to safer places accordingly, stay indoors, close windows & doors and avoid travel if possible, take safe shelters; do not take shelter under trees, do not lie on concrete floors and do not lean against concrete walls, unplug electrical/ electronic appliances, immediately get out of water bodies, keep away from all the objects that conduct electricity.

Impact & Action Suggested due to

- ❖ Isolated very heavy rainfall over Jammu & Kashmir, Himachal Pradesh, Punjab, Haryana, Chandigarh, West Rajasthan on 25th & 26th; East Rajasthan, Gujarat during 25th-27th and Uttarakhand on 29th & 30th; Odisha on 26th & 27th and Coastal Andhra Pradesh on 26th August

Impact Expected

- Localized Flooding of roads, water logging in low lying areas and closure of underpasses mainly in urban areas of the above region.
- Occasional reduction in visibility due to heavy rainfall.
- Disruption of traffic in major cities due to water logging in roads leading to increased travel time.
- Minor damage to kutcha roads.
- Possibilities of damage to vulnerable structure.
- Localized Landslides/Mudslides/landslips/mudslips/landsinks/mudsinks.
- Damage to horticulture and standing crops in some areas due to inundation.
- It may lead to riverine flooding in some river catchments (for riverine flooding please visit Web page of CWC)

Action Suggested

- Check for traffic congestion on your route before leaving for your destination.
- Follow any traffic advisories that are issued in this regard.
- Avoid going to areas that face the water logging problems often.
- Avoid staying in vulnerable structure.

Agromet advisories for likely impact of Heavy / Heavy to Very Heavy / Extremely Heavy Rainfall

- In **Jammu and Kashmir**, do not allow water to stagnate in fields of maize, pulses, cowpea, bajra and vegetables in **Sub Tropical Zone**. Proper drainage should be ensured in the fields of paddy, maize, Pulses, horticultural and vegetable crops in **Intermediate Zone**.
- In **Himachal Pradesh**, maintain proper drainage channels in ginger, turmeric and maize fields in **Mid Hills Sub Humid Zone** and rice, maize and vegetable fields in **Sub Montane and Low Hills Sub Tropical Zone**. In **High Hills Sub Temperate Wet Zone**, harvest ripened tomatoes and ensure proper drainage in maize, kidney bean, vegetable fields and fruit orchards.
- In **Uttarakhand**, maintain proper drainage channels in fields of soybean, maize, pulses, finger millet, ginger, vegetable and fruit orchards in **Hill Zone**; barnyard millet, finger millet and green gram in **Sub Humid Sub Tropic Zone** and rice, green gram, black gram, sugarcane, maize, soybean, groundnut and vegetables in **Bhabar and Tarai Zone**.
- In **Punjab**, ensure proper drainage in fields of cotton and maize in **Western Zone**; sugarcane, maize and cotton in **Central Plain Zone**; cotton in **Western Plain Zone** and sugarcane, maize, soybean and green gram in **Sub-Montane Undulating Zone**. Maintain proper drainage in chilli fields and remove stagnant rainwater immediately after rainfall in **Undulating Plain Zone**.
- In **Haryana**, to prevent waterlogging make arrangements to drain out excess water from fields of sugarcane, cotton, maize, pearl millet and vegetables in **Eastern Zone** and cotton, pearl millet, green gram and cluster bean in **Western Zone**.
- In **West Rajasthan**, make provision to drain out excess rain water from fields of pearl millet, green gram and cluster bean in **Arid Western Plain Zone**; cotton, green gram and cluster bean in **Irrigated North Western Plain Zone** and vegetable nurseries, groundnut and pulses in **Transitional Plain Zone of Inland Drainage**. In **East Rajasthan**, make arrangements to drain out excess water from fields of maize, soybean, groundnut and vegetable nurseries in **Sub Humid Southern Plain and Aravali Hill Zone**; pearl millet, sorghum, maize, green gram, black gram, moth bean, sesame and cluster bean in **Flood Prone Eastern Plain Zone**; groundnut, green gram, moth bean, cowpea, pearl millet, maize, sorghum and vegetables in **Semi-Arid Eastern Plain Zone** and soybean, maize and cotton in **Southern Humid Plain Zone**.
- In **Gujarat**, make arrangements to drain out excess water from fields of castor, cotton, groundnut, pearl millet and sesame in **North Gujarat Zone**; rice, pearl millet, pigeon pea, green gram, black gram, cotton, soybean, maize, castor and vegetables in **Middle Gujarat Zone**; groundnut, cotton, sesame, black gram,

green gram, pigeon pea and castor in **North Saurashtra Zone**; rice, cotton, green gram, black gram, pigeon pea, pearl millet and vegetables in **Bhal and Coastal Zone**; rice, sugarcane, vegetables and tuber crops in **South Gujarat Heavy Rainfall Zone**; groundnut, cotton, soybean, black gram, green gram, sesame and pigeon pea in **South Saurashtra Zone** and rice, cotton, sugarcane and pigeon pea in **South Gujarat Zone**.

- In **Odisha**, make provision for draining out excess rain water from fields of green gram, black gram, sugarcane, vegetables and fruit orchards in **East and South Eastern Coastal Plain Zone**; pulses, maize, pigeon pea, groundnut and vegetables in **North Eastern Ghat Zone**; rice, vegetables and fruit orchards in **North Eastern Coastal Plain Zone** and rice, maize, black gram and vegetables in **North Central Plateau Zone**.
- In **Madhya Pradesh**, provide adequate drainage in fields of soybean, maize and vegetables in **Kymore Plateau and Satpura Hill Zone** and soybean, green gram, black gram and maize in **Bundelkhand Zone**.
- In **Chhattisgarh**, ensure proper drainage in fields of rice and vegetables in **North Hill Zone** and maize, groundnut, soybean, pigeon pea and vegetables in **Chattisgarh Plain Zone**. Postpone fresh transplanting of rice in low land areas in **North Hill Zone**.

Livestock / Fishery

- Keep the animals inside the shed during heavy rainfall and provide them balanced feed.
- Store feed and fodder in a safe place to prevent spoilage.
- Construct an outlet with proper netting around the ponds to drain out excess water, thereby preventing fish from escaping in case of overflow.

Agromet advisories for likely impact of Thunderstorm / Gusty Winds / Squally Winds

(Based on the IBF and advisories issued by different AMFUs)

- Provide mechanical support to horticultural crops and staking or support to vegetables and young fruit plants / fruit-bearing plants to avoid lodging due to strong winds.

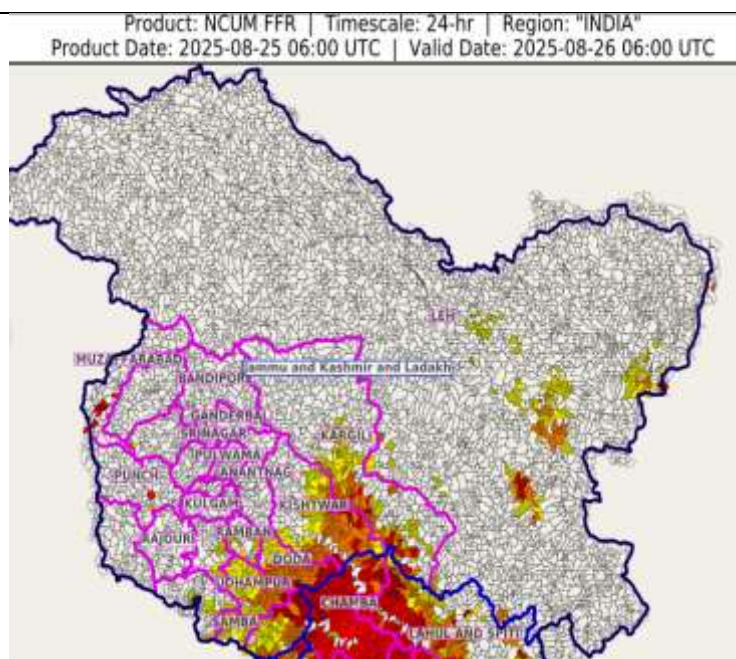
Flash flood guidance:

24 hours Outlook for the Flash Flood Risk (FFR) till 1130 IST of 26-08-2025 :

Moderate flash flood risk likely over few watersheds & neighbourhoods of following Met Sub-divisions during next 24 hours.

Jammu & Kashmir & Ladakh - Bandipore, Baramula, Doda, Jammu, Kathua, Kistwar, Punch, Ramban, Riasi, Samba, Udhampur, Leh And Ladakh and Muzaffarabad districts.

Surface runoff/ Inundation may occur at some fully saturated soils & low-lying areas over Area of Concern (AoC) as shown in map due to expected rainfall occurrence in next 24 hours.



24 hours Outlook for the Flash Flood Risk (FFR) till 1130 IST of 26-08-2025 :

Moderate flash flood risk likely over few watersheds & neighbourhoods of following Met Sub-divisions during next 24 hours.

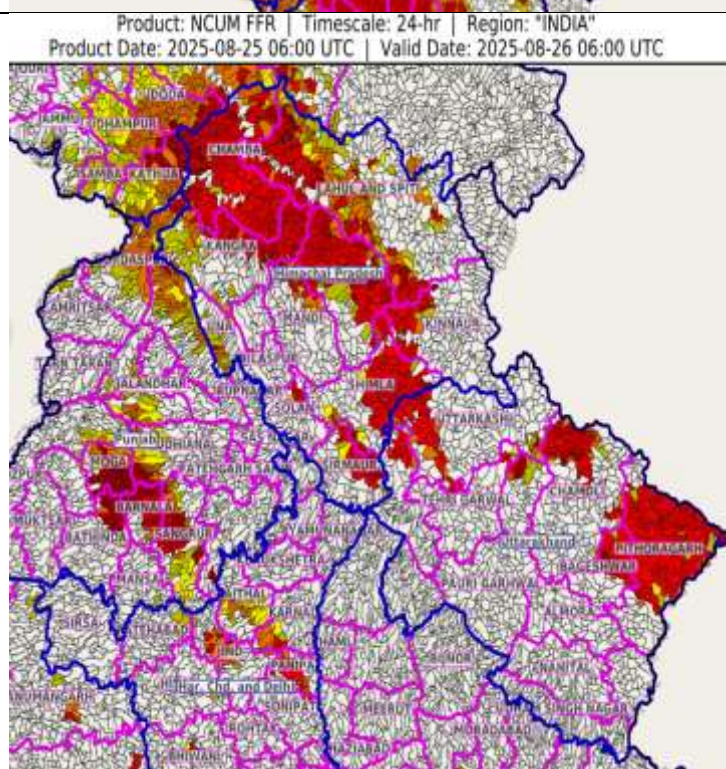
Haryana - Chandigarh & Delhi - Bhiwani, Fatehabad, Hisar, Jind, Kaithal, Karnal and Panipat districts.

Himachal Pradesh - Chamba, Kangra, Kinnaur, Kullu, Lahul&Spiti, Mandi, Shimla, Sirmaur, Solan and Una districts.

Punjab - Amritsar, Barnala, Bathinda, Faridkot, Firozpur, Gurdaspur, Hoshiarpur, Jalandhar, Kapurthala, Ludhiana, Mansa, Moga, Patiala and Sangrur districts.

Uttarakhand - Bageshwar, Chamoli, Dehradun, Pithoragarh, Rudraprayag, Tehri Garwal and Uttarkashi districts.

Surface runoff/ Inundation may occur at some fully saturated soils & low-lying areas over Area of Concern (AoC) as shown in map due to expected rainfall occurrence in next 24 hours.



Legends & abbreviations:

- ❖ **Heavy Rain:**64.5-115.5mm; **Very Heavy Rain:**115.6-204.4mm; **Extremely Heavy Rain:** >204.4mm.
- ❖ **Obsy:** Observatory; Automatic Weather Station; **ARG:** Automatic Rain Gauge; **dist:** District; **NH:** National Highway; **KVK:** Krishi Vigyan Kendra; **DVC:** Damodar Valley Corporation; **PTO:** Part Time Office, **Aero:** Aerodrome, **IAF:** Indian Air Force.
- ❖ **Region wise classification of meteorological Sub-Divisions:**
 - **Northwest India:** Western Himalayan Region (Jammu-Kashmir-Ladakh-Gilgit-Baltistan-Muzaffarabad, Himachal Pradesh and Uttarakhand); Punjab, Haryana-Chandigarh-Delhi; West Uttar Pradesh, East Uttar Pradesh, West Rajasthan and East Rajasthan.
 - **Central India:** West Madhya Pradesh, East Madhya Pradesh, Vidarbha and Chhattisgarh.
 - **East India:** Bihar, Jharkhand, Sub-Himalayan West Bengal & Sikkim; Gangetic West Bengal, Odisha and Andaman & Nicobar Islands.
 - **Northeast India:** Arunachal Pradesh, Assam & Meghalaya and Nagaland, Manipur, Mizoram & Tripura.
 - **West India:** Gujarat Region, Saurashtra & Kutch, Konkan & Goa, Madhya Maharashtra and Marathawada.
 - **South India:** Coastal Andhra Pradesh & Yanam, Telangana, Rayalaseema, Coastal Karnataka, North Interior Karnataka, South Interior Karnataka, Kerala & Mahe, Tamil Nadu, Puducherry & Karaikal and Lakshadweep.

LEGENDS

1. अंडमान और निकोबार द्वीपसमूह

2. अरुणाचल प्रदेश

3. असम और मेघालय

4. नागालैंड, मणिपुर, मिजोरम और त्रिपुरा

5. उप-हिमालयी पश्चिम बंगाल और सिक्किम

6. गंगीय पश्चिम बंगाल

7. ओडिशा

8. झारखंड

9. बिहार

10. पूर्वी उत्तर प्रदेश

11. पश्चिम उत्तर प्रदेश

12. उत्तराखंड

13. हरियाणा, चंडीगढ़ और दिल्ली

14. पंजाब

15. हिमाचल प्रदेश

16. जम्मू और कश्मीर और लद्दाख

17. पश्चिम राजस्थान

18. पूर्वी राजस्थान

19. पश्चिम मध्य प्रदेश

20. पूर्वी मध्य प्रदेश

21. गुजरात

22. सौराष्ट्र

23. कोंकण और गोवा

24. मध्य महाराष्ट्र

25. मराठवाड़ा

26. विदर्भ

27. छत्तीसगढ़

28. तटीय आंध्र प्रदेश और यनम

29. तेलंगाना

30. रायलसीमा

31. तमिलनाडु, पुडुचेरी और कराईकल

32. तटीय कर्नाटक

33. आंतरिक उत्तरी कर्नाटक

34. आंतरिक दक्षिणी कर्नाटक

35. केरल और माहे

36. लक्षद्वीप



1. Andaman & Nicobar Islands

2. Arunachal Pradesh

3. Assam & Meghalaya

4. Nagaland, Manipur, Mizoram & Tripura

5. Sub-Himalayan West Bengal & Sikkim

6. Gangetic West Bengal

7. Odisha

8. Jharkhand

9. Bihar

10. East Uttar Pradesh

11. West Uttar Pradesh

12. Uttarakhand

13. Haryana, Chandigarh & Delhi

14. Punjab

15. Himachal Pradesh

16. Jammu & Kashmir and Ladakh

17. West Rajasthan

18. East Rajasthan

19. West Madhya Pradesh

20. East Madhya Pradesh

21. Gujarat

22. Saurashtra

23. Konkan & Goa

24. Madhya Maharashtra

25. Marathwada

26. Vidarbha

27. Chhattisgarh

28. Coastal Andhra Pradesh & Yanam

29. Telangana

30. Rayalaseema

31. Tamilnadu, Puducherry & Karaikal

32. Coastal Karnataka

33. North Interior Karnataka

34. South Interior Karnataka

35. Kerala & Mahe

36. Lakshadweep

SPATIAL DISTRIBUTION (% of Stations reporting)

% Stations	Category	% Stations	Category
76-100	Widespread (WS/Most Places)	26-50	Scattered (SCT/A Few Places)
51-75	Fairly Widespread (FWS/Many Places)	1-25	Isolated (ISOL)



Fog



Heavy Snow



Cold Wave



Heavy Rain



Dust Storm



Cold Day



Very Heavy Rain



Heat Wave



Ground Frost



Extremely Heavy Rain



Warm Night



Thunder & Lightning



Hot Day



Hailstorm



Hot & Humid



Dust Raising Winds



Strong Surface Winds

COLOUR CODED WARNING

No Warning (No Action)

Watch (Be Aware)

Alert (Be Prepared To Take Action)

Warning (Take Action)

Probabilistic Forecast

Terms	Probability of Occurrence (%)
Unlikely	< 25
Likely	25 - 50
Very Likely	50 - 75
Most Likely	> 75

* Red colour warning does not mean "Red Alert", Red colour warning means "Take Action".

Forecast and Warning for any day is valid from 0830 hours IST of day till 0830 hours IST of next day.

For more details, kindly visit <https://mausam.imd.gov.in> or contact: 011-2434-4599

(Service to the Nation since 1875)

DEFINITION/CRITERIA

Rain/ Snow *

Heavy: 64.5 to 115.5 mm/cm *
Very Heavy: 115.6 to 204.4 mm/cm *
Extremely Heavy: > 204.4 mm/cm *

Heat Wave

When maximum temperature of a station reaches $\geq 40^{\circ}\text{C}$ for plains and $\geq 30^{\circ}\text{C}$ for hilly regions
(a) Based on Departure from normal

Heat Wave: Maximum Temperature Departure from normal 4.5°C to 6.4°C .

Severe Heat Wave: Maximum Temperature Departure from normal $\geq 6.5^{\circ}\text{C}$

(b). Based on Actual maximum temperature

Heat Wave: When actual maximum temperature $\geq 45^{\circ}\text{C}$.

Severe Heat Wave: When actual maximum temperature $\geq 47^{\circ}\text{C}$.

(c). Criteria for heat wave for coastal stations

When maximum temperature departure is $> 4.5^{\circ}\text{C}$ from normal. Heat Wave may be described provided maximum temperature $\geq 37^{\circ}\text{C}$.

Warm Night

When maximum temperature remains 40°C

Warm Night: When minimum temperature departure 4.5°C to 6.4°C .

Severe Warm Night: When minimum temperature departure $> 6.4^{\circ}\text{C}$.

Cold Wave

When minimum temperature of a station $\leq 10^{\circ}\text{C}$ for plains and $\leq 0^{\circ}\text{C}$ for hilly regions.

(a). Based on departure

Cold Wave: Minimum Temperature Departure from normal -4.5°C to -6.4°C .

Severe Cold Wave: Minimum Temperature Departure from normal $\leq -6.5^{\circ}\text{C}$

(b) Based on actual Minimum Temperature (for Plains only)

Cold Wave: When Minimum Temperature is $\leq 4.0^{\circ}\text{C}$

Severe Cold Wave: When Minimum Temperature is $\leq 2.0^{\circ}\text{C}$

(c) For Coastal Stations

When Minimum Temperature departure is $\leq -4.5^{\circ}\text{C}$ & actual Minimum Temperature is $\leq 15^{\circ}\text{C}$

Cold Day

When minimum temperature of a station $\leq 10^{\circ}\text{C}$ for plains and $\leq 0^{\circ}\text{C}$ for hilly regions

Based on departure

Cold Day: Maximum Temperature Departure from normal -4.5°C to -6.4°C .

Severe Cold Day: Maximum Temperature Departure from normal $\leq -6.5^{\circ}\text{C}$

Fog

Phenomenon of small droplets suspended in air and the horizontal visibility $< 1\text{km}$

Moderate Fog: When the visibility between 500-200 metres

Dense Fog: when the visibility between 50- 200 metres

Very Dense Fog: when the visibility < 50 metres

Thunderstorm

Sudden electrical discharges manifested by a flash of light (Lightning) and a sharp rumbling sound (thunder)

Dust/Sand Storm

An ensemble of particles of dust or sand energetically lifted to great heights by a strong and turbulent wind.

Frost

Ice deposits on ground

Air temperature $\leq 4^{\circ}\text{C}$ (over Plains)

Squall

A strong wind that rises suddenly, lasts for atleast 1 minute.

Moderate: Wind speed 52-61 kmph

Severe: Wind speed 62-67 kmph

Very Severe: Wind speed > 67 kmph

Sea State

Effect of various waves in the sea over specific area

Rough to very rough: Wind speed 41-62 kmph (22-33 knots) & Wave height 2.5-6 metre

High to very high: Wind speed 63-117 kmph (34-63 knots) & Wave height 6-14 metre

Phenomenal: Wind speed > 117 kmph (> 63 knots) & Wave height > 14 metre

Cyclone

Cyclonic Storm: Wind speed 62-87 kmph (34-47 knots)

Severe Cyclonic Storm: Wind speed 88-117 kmph (48-63 knots)

Very Severe Cyclonic Storm: Wind speed 118-165 kmph (64 - 89 knots)

Extremely Severe Cyclonic Storm: Wind speed 166-220 kmph (90 -119 knots)

Super Cyclone Storm: Wind speed > 220 kmph (> 119 knots)

* Red colour warning does not mean "Red Alert", Red colour warning means "Take Action".

Forecast and Warning for any day is valid from 0830 hours IST of day till 0830 hours IST of next day.

For more details, kindly visit <https://mausam.imd.gov.in> or contact: 011-2434-4599

(Service to the Nation since 1875)

Hot and Humid: When maximum temperatures remain 3°C above normal along with the above normal relative humidity.